

**TOWN OF SOUTHAMPTON: HISTORIC CEMETERY
INVENTORY SHEET**

Survey File # HistCemSO1 Photo # SouthamptonNorth 001-011

Hamlet Southampton Town List No. #5246 Acres 1.8

Street Address #165 Main Street Section/Block/Lot/ 904-006-2-1

Common Name North End Burial Ground Status? inactive

Historic Name North End Graveyard

Owner/Contact Person: Town of Southampton/Allyn F. Jackson, Superintendent,

Southampton Parks & Recreation Department ; Emily Oster, Town

Historian [contact/information only: #631-653-5205]

Phone # (631)-728-8585 E-mail _____

Address #6 Newtown Lane, Hampton Bays, NY 11946

Description: Prominent Features large, rectangular burial ground stretches

between two village streets in downtown urban setting

Headstones [approx] 670 DAR # _____ Date Range 1712-1940

Stone Types marble, sandstone & slate

Condition generally "poor"; extensive erosion of stone surfaces due to

weathering, with pervasive breakage and loss of stone fabric

Miscellaneous Features extensive survival and integrity of early stones;

footstones repositioned against headstones to facilitate maintenance

Maintained by: Town? yes Other? _____

Date Recorded February 2004 Recorded By Z. Studenroth

References: Maps _____

Views Armbruster [Vol. 5/#625 (July/1923); Vol. 12/#1749-51 (July/1923)]
Published Sources NYS Cemeteries Name/Location Inventory 1995-1997 [p.
862]; Southampton Town Map Records, Book 4 [pp. 56 & 60]; Town
Trustees Records, Part I, 1741-1826 Book V [pp 170, 173 & 185]; Welch,
Gravestones of Early Long Island [p. 82]

North End Burial Ground Southampton Historic Cemetery Inventory No. S01

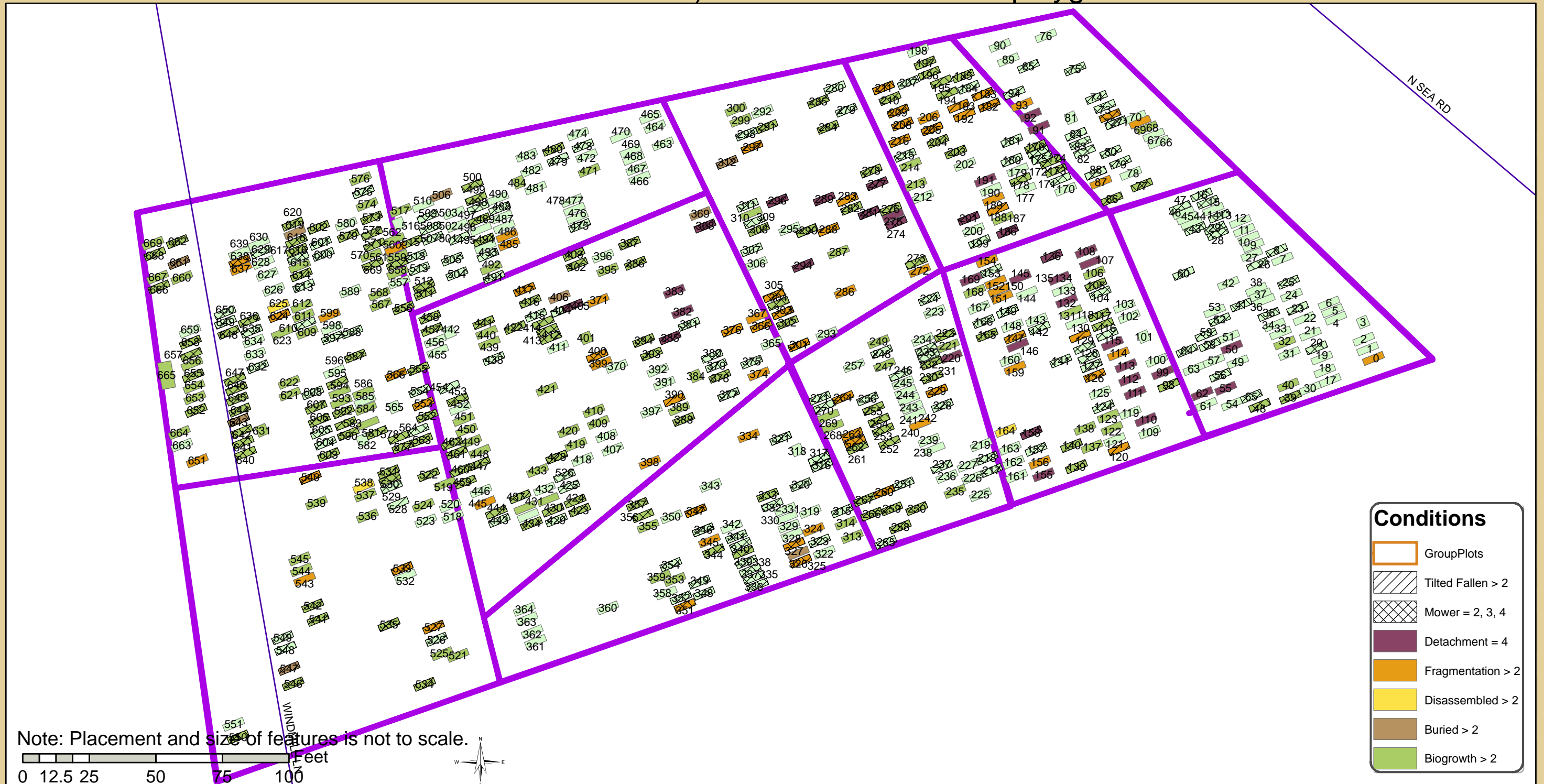
The 2001 digital orthophotography files are projected in the New York State Plane, NAD 83, Survey Feet, with a resolution of .5 feet, natural color film. Downloaded from the NYS GIS Clearinghouse.



North End Burial Ground Southampton Historic Cemetery Inventory No. S01

Pattern of Key Conditions

If several conditions are present, the top (most serious or most remarkable) conditions covers the polygon.



Note: Placement and size of features is not to scale.

0 12.5 25 50 75 100 Feet



North End Burial Ground Southampton Historic Cemetery Inventory No. SO1

Distributed by Primary Marker Type



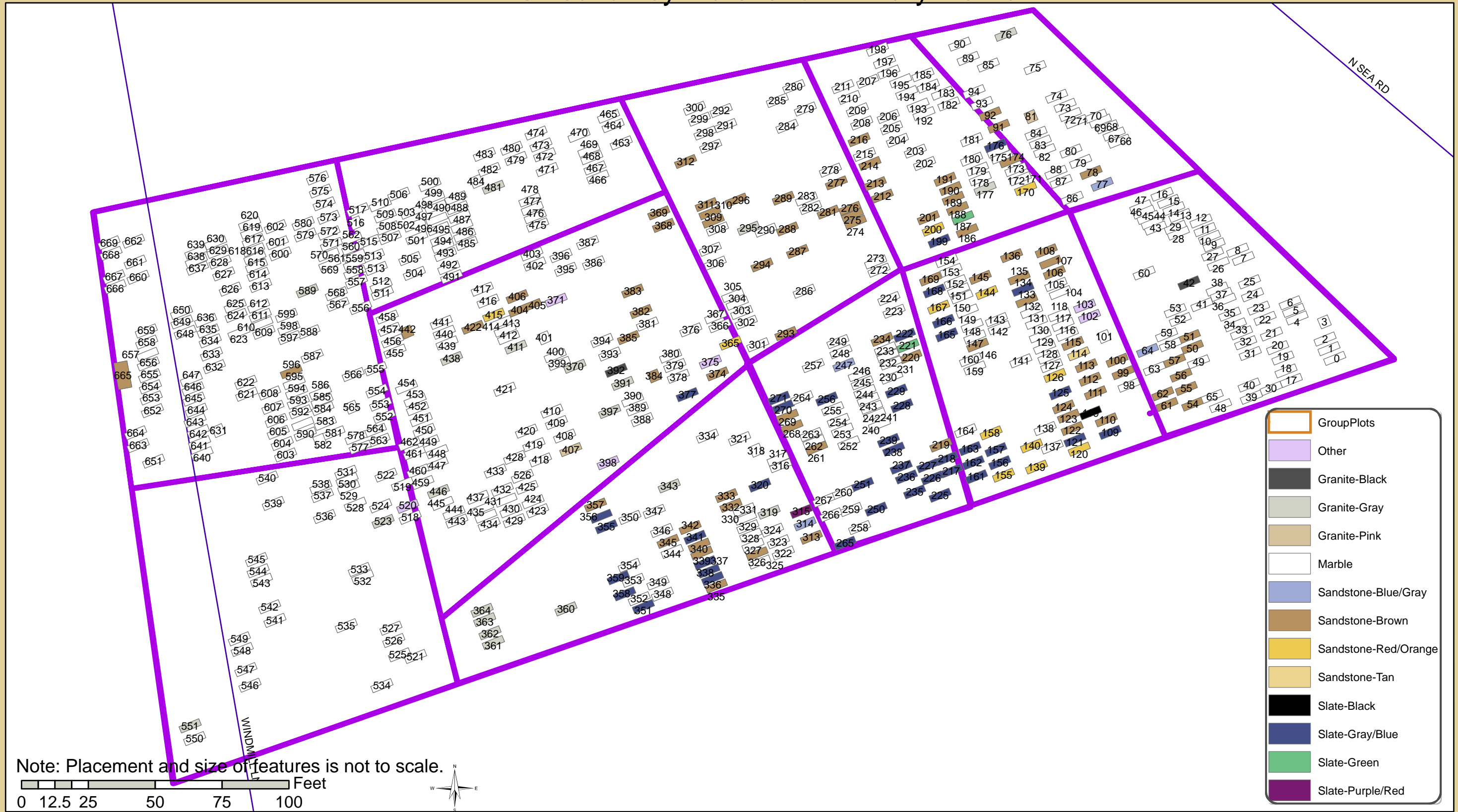
Note: Placement and size of features is not to scale.



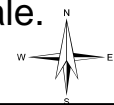
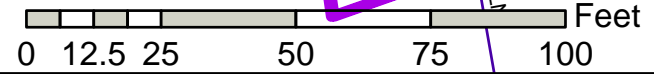
Marker Type

- Other
- Headstone w/ Footstone
- Headstone w/o Footstone
- Headstone in Base w/ Footstone
- Headstone in Base
- Rectangular/Square Block
- Block on Base
- Only Footstone Remains

North End Burial Ground Southampton Historic Cemetery Inventory No. S01 Distribution by Material of Primary Marker



Note: Placement and size of features is not to scale.

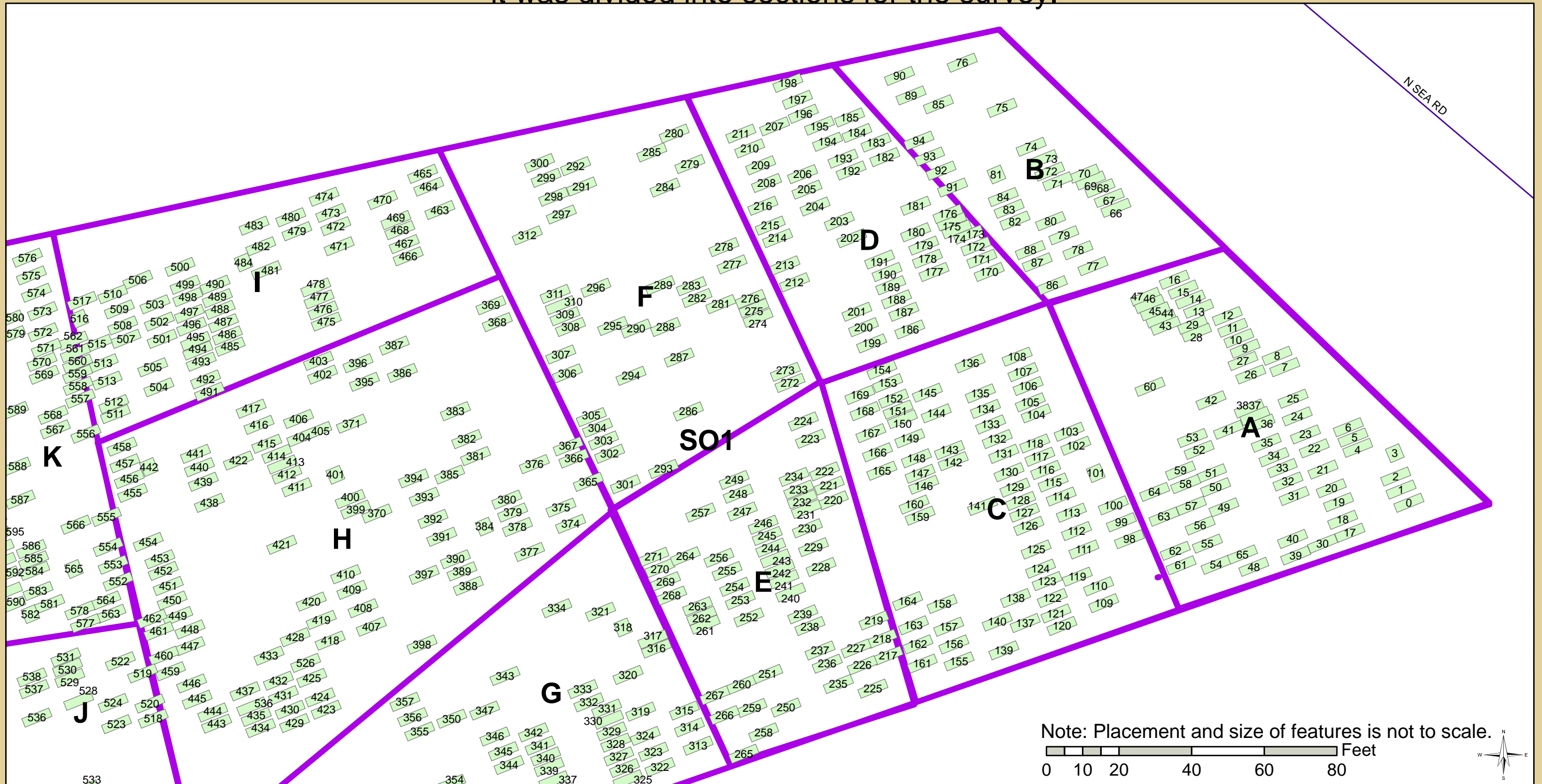


- GroupPlots
- Other
- Granite-Black
- Granite-Gray
- Granite-Pink
- Marble
- Sandstone-Blue/Gray
- Sandstone-Brown
- Sandstone-Red/Orange
- Sandstone-Tan
- Slate-Black
- Slate-Gray/Blue
- Slate-Green
- Slate-Purple/Red

North End Burial Ground Southampton Historic Cemetery Inventory No. S01

East Side

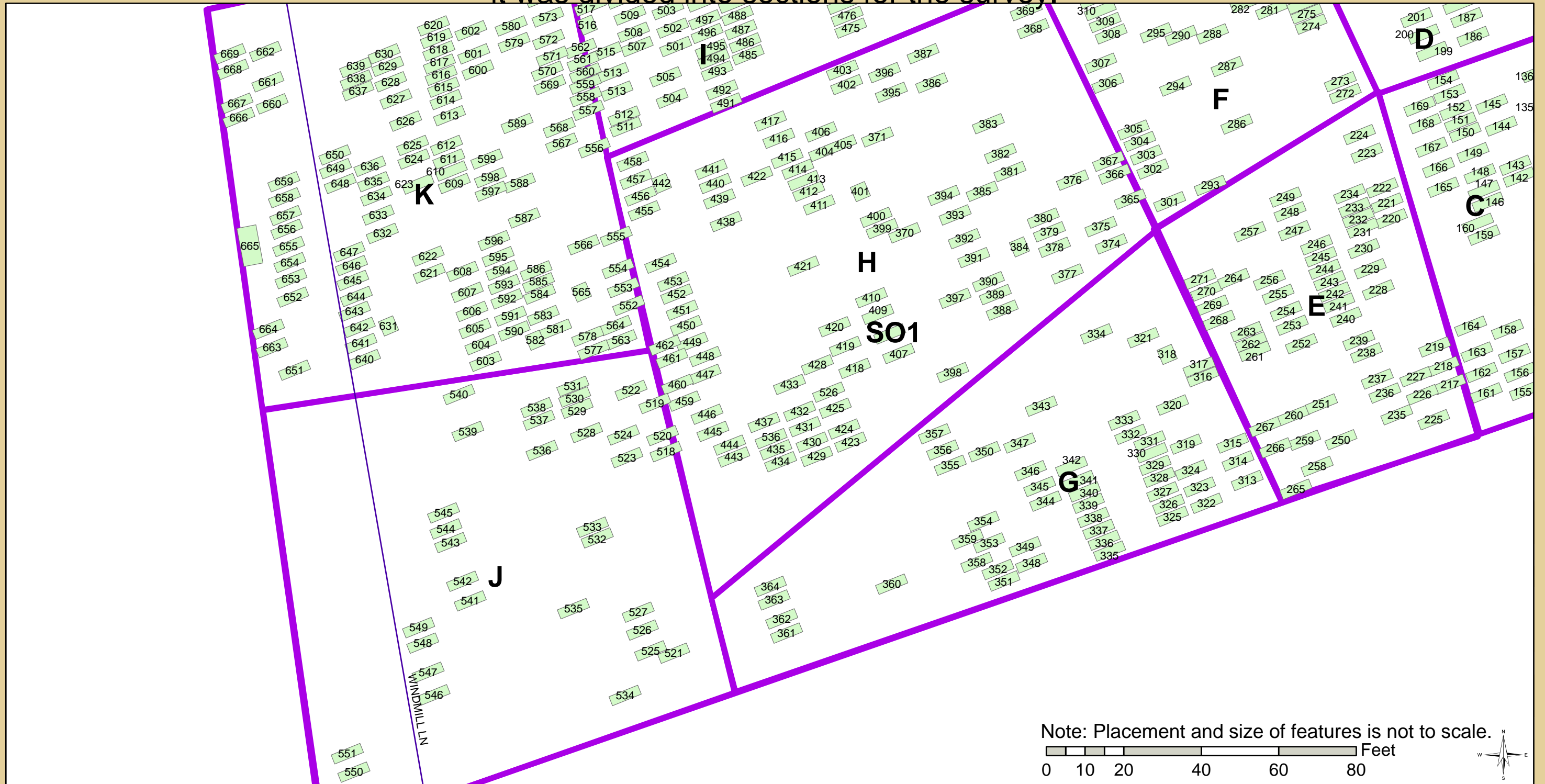
Because of the size of North End Burial Ground,
it was divided into sections for the survey.



North End Burial Ground Southampton Historic Cemetery Inventory No. S01

West Side

Because of the size of North End Burial Ground,
it was divided into sections for the survey.



North End Burial Ground Southampton Historic Cemetery Inventory No. S01 Distribution by First Death Date

